



SIMPLY HOMES

Church Street

Welwyn AL6 9LP



Church Street

Welwyn AL6 9LP



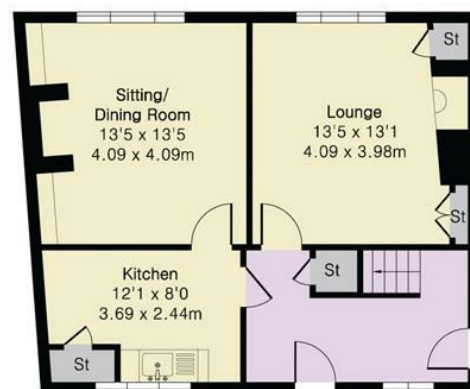
**Approximate Gross Internal Area 1092 sq ft - 102 sq m
(Excluding Barn)**

Ground Floor Area 566 sq ft – 53 sq m

First Floor Area 526 sq ft – 49 sq m

Garage Ground Floor Area 240 sq ft – 22 sq m

Garage First Floor Area 268 sq ft – 25 sq m



Ground Floor



First Floor



SIMPLY HOMES

115 Fore Street | Hertford | SG14 1AS | 01992 558 557 | sales@simply-homes.co.uk | simply-homes.co.uk | Find us on

